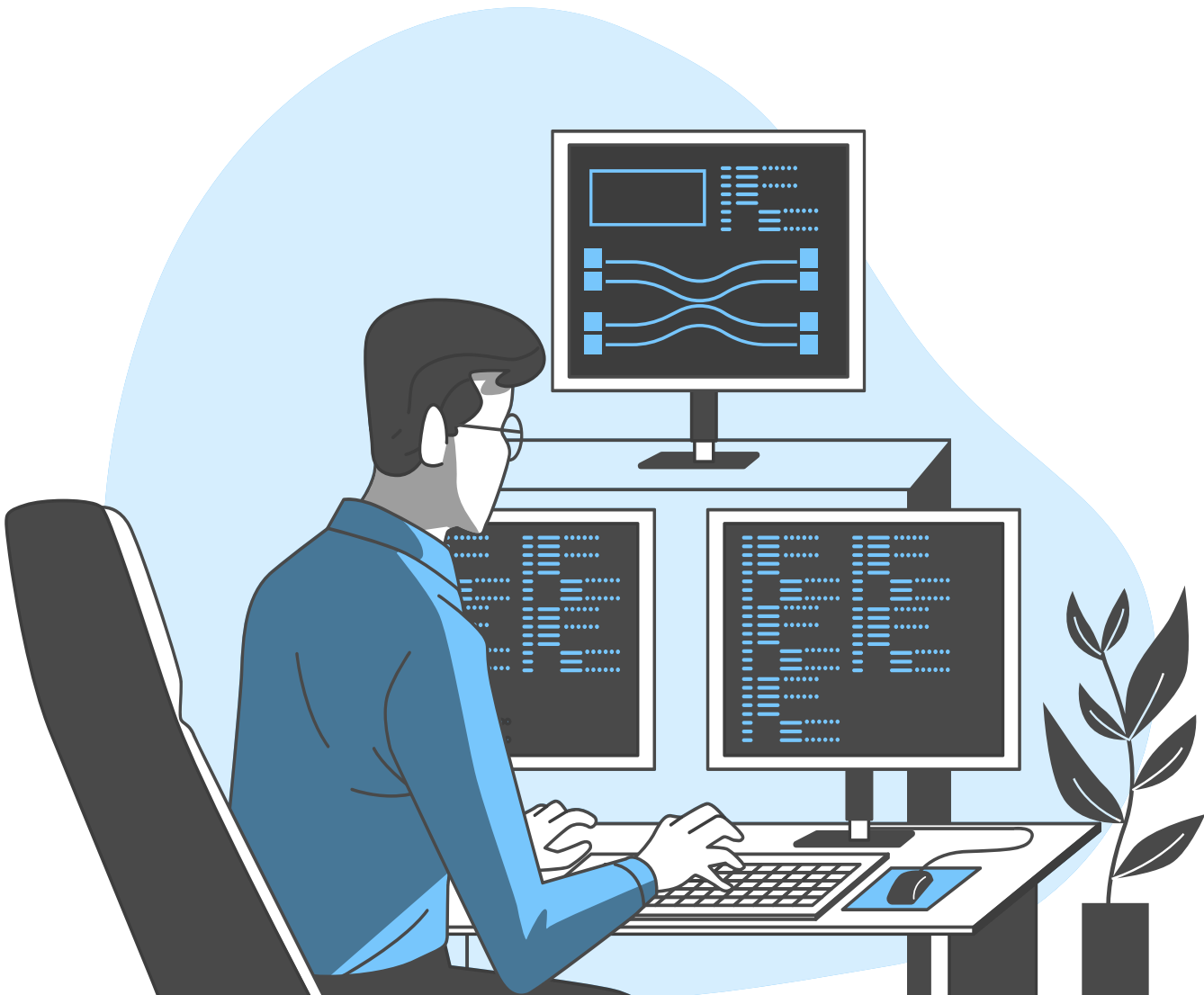
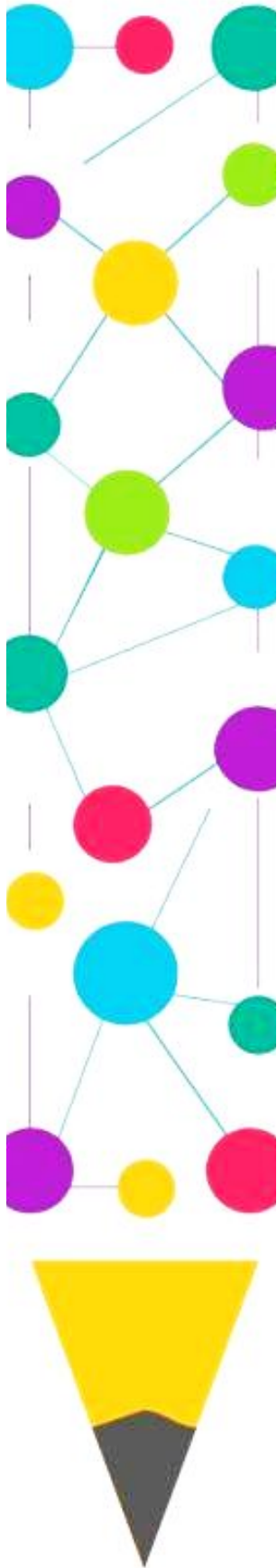


شرتا
Sherta ERP
CATALOG



The million dollar problem



From traditional to contemporary

Traditionally, the silo nature of the functional organisational structure and the cross-functional nature of the business processes were at odds with each other. The same information was captured multiple times, in multiple places, and was not available in real-time.

Viewing it from a process perspective requires the business to be viewed across functional boundaries and focus on the end-to-end nature of the process and its intended outcomes.

In contemporary times, an organisation has to react quickly to changing market trends. To survive, thrive, and beat the competition, it has to manage the future. Managing the future is managing information.

The organisation must be on its toes incessantly, gathering and analysing the data—both in-house and from outside—acting and reacting in real time. The difference between market leaders and laggards, between success and sickness, is the way in which companies make use of information.

The business end-to-end processes that were traditionally disjointed can now share information through a common database.



The Sherta business solution

Enterprise Resource Planning (ERP) is a Commercial Off-The-Shelf (COTS) multi-module enterprise-wide information application software. It integrates the information systems of an organisation and automates the business functions supporting sales, marketing, finance, accounting, and human resources.

Our comprehensive solutions include
ERP,
Business Intelligence,
Data Warehousing,
Marketing & Customer Service.

We have ERP with maximum automation possibilities,
Project Management including Work in Progress
Time Sheet Integration with Payroll up to WPS

We take special care to provide the best and at the most economical cost. The key to lowering the cost of ownership of the ERP solution comes through ensuring standard processing for business transactions with suitable customizations that fit the business needs exactly.



Who we are

Sherta Technology Services has a strong technical team with financial and supply chain functional knowledge backed up by ERP professionals who have more than three decades of ERP experience. Our strategy is to serve our customers with agility and change the system to best match the business market conditions on an ongoing basis.

At Sherta, we believe in the value of customer needs. We have our professionals in various streams, vertically and horizontally, that comprise domain and technological experts. Our professionals include MBAs, certified sales process engineers, and customer retention experts. We have special expertise in web sales, healthcare, and a great development team in Chennai, India.



What we do



1

We foster relationships between business functions and end-to-end customer-centric processes organizing outcomes not tasks. This removes the restrictive limitations of the siloed nature of traditional business departments.

2

Sherta seamless integration, enable businesses to focus on core needs without worrying about the details of the underlying process automation making ERP transition practical.

3

We identify technology, training, and the process to help businesses reach success and profitability. We create a synergistic partnership between the business departments and our team for a successful implementation.



Sherta best practices

1. Support each organization's unique environment and requirements
2. Reduce lengthy, complex, multi-step processes to the fewest number of steps possible.
3. Use a consistent process to handle all document types (paper, fax, electronic).
4. Automate the streamlined new processes
5. Include all key participants in the process, from line-of-business managers to suppliers.
6. Associate all relevant information involved in each ERP transaction automatically.

The most important step of our implementation is the gap analysis phase, which is the negotiation phase between the company's requirements and the functions a module possesses. The first important point is to clearly define the objectives and goals of the company by notifying them and getting them approved throughout the entire organization. Finally, it is the involvement of the management in the project and the prompt decision-making skills.

Value creation to lead

Sherta ERP enables value creation by changing the basic nature of organisations in a number of different ways, such as:

- Integrate the organizations' activities
- Force the use of "best practices"
- Enable organisational standardisation
- Eliminate information asymmetries
- Provide on-line and real-time information
- Allow simultaneous access for control;
- Facilitate intra-organization communication
- Enable inter-organization



Our technological staircase

Utilizing modern tools to make it as easy as possible for users to perform transactions in a way that best matches their needs and interact with potentially complex systems, using any type of device and a growing number of interaction possibilities. Our focus will be more towards automation, integration and digitalization.

In the three-tier architecture, an application layer sits between the client and the database layer. The Linux, Apache, MySQL, and PHP (LAMP) is the backend stack, which is the application and database, while the client is an HTML5, CSS, and Javascript frontend. The application layer is responsible for executing the business logic and interacting with the client application. The number of clients that can be serviced increases tremendously as the application layer does not have to dedicate its services to the clients. The client does not process the business logic; it only processes the user's input and displays the information supplied by the application layer. The advantage of the web browser is that it can run on a variety of machines and platforms and offer an almost identical experience.



Automatic data updating capacity (automatic data exchange among processes) between related business components. One is able to grasp business details in real-time. This helps carry out various types of management decisions in a timely manner.

The most important step of ERP implementation is the gap analysis phase, which is the negotiation phase between the company's requirements and the functions that can be added.

Improved analysis and planning abilities

Having a single point of entry, the risk of inaccuracy in the end-to-end transaction is reduced, resulting in fewer reconciliation points. There is no time lag, re-entry of information, or dependency on paper documents.

